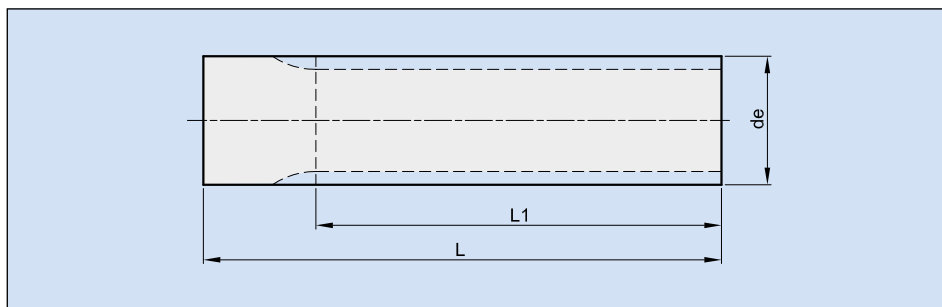


## Zahnriemenwellen HTD



| Artikel-Nr.<br>Ketten Fuchs | Zähne-<br>zahl | Abmessungen in mm |        |       |       | Werk-<br>stoff |
|-----------------------------|----------------|-------------------|--------|-------|-------|----------------|
|                             |                | Dp                | De     | L1    | L     |                |
| 5M-12                       | 12             | 19,10             | 17,96  | 150,0 | 160,0 | Alu            |
| 5M-13                       | 13             | 20,69             | 19,55  | 150,0 | 160,0 | Alu            |
| 5M-14                       | 14             | 22,28             | 21,14  | 175,0 | 200,0 | Alu            |
| 5M-15                       | 15             | 23,87             | 22,73  | 175,0 | 200,0 | Alu            |
| 5M-16                       | 16             | 25,47             | 24,33  | 175,0 | 200,0 | Alu            |
| 5M-17                       | 17             | 27,06             | 25,92  | 175,0 | 200,0 | Alu            |
| 5M-18                       | 18             | 28,65             | 27,51  | -     | 200,0 | Alu            |
| 5M-19                       | 19             | 30,24             | 29,10  | -     | 200,0 | Alu            |
| 5M-20                       | 20             | 31,83             | 30,69  | -     | 200,0 | Alu            |
| 5M-21                       | 21             | 33,42             | 32,28  | -     | 200,0 | Alu            |
| 5M-22                       | 22             | 35,02             | 33,88  | -     | 200,0 | Alu            |
| 5M-23                       | 23             | 36,61             | 35,47  | -     | 200,0 | Alu            |
| 5M-24                       | 24             | 38,20             | 37,06  | -     | 200,0 | Alu            |
| 5M-25                       | 25             | 39,79             | 38,65  | -     | 200,0 | Alu            |
| 5M-26                       | 26             | 41,38             | 40,24  | -     | 200,0 | Alu            |
| 5M-27                       | 27             | 42,97             | 41,83  | -     | 200,0 | Alu            |
| 5M-28                       | 28             | 44,56             | 43,42  | -     | 200,0 | Alu            |
| 5M-30                       | 30             | 47,75             | 46,61  | -     | 200,0 | Alu            |
| 5M-32                       | 32             | 50,93             | 49,79  | -     | 200,0 | Alu            |
| 5M-34                       | 34             | 54,11             | 52,97  | -     | 200,0 | Alu            |
| 5M-36                       | 36             | 57,30             | 56,16  | -     | 200,0 | Alu            |
| 5M-38                       | 38             | 60,48             | 59,34  | -     | 200,0 | Alu            |
| 5M-40                       | 40             | 63,66             | 62,52  | -     | 200,0 | Alu            |
| 5M-42                       | 42             | 66,85             | 65,71  | -     | 200,0 | Alu            |
| 5M-44                       | 44             | 70,03             | 68,89  | -     | 200,0 | Alu            |
| 5M-45                       | 45             | 71,62             | 70,48  | -     | 200,0 | Alu            |
| 5M-48                       | 48             | 76,40             | 75,26  | -     | 200,0 | Alu            |
| 5M-50                       | 50             | 79,58             | 78,44  | -     | 200,0 | Alu            |
| 5M-60                       | 60             | 95,50             | 94,36  | -     | 200,0 | Alu            |
| 5M-72                       | 72             | 114,59            | 113,45 | -     | 200,0 | Alu            |

| Artikel-Nr.<br>Ketten Fuchs | Zähne-<br>zahl | Abmessungen in mm |        |    |       | Werk-<br>stoff |
|-----------------------------|----------------|-------------------|--------|----|-------|----------------|
|                             |                | Dp                | De     | L1 | L     |                |
| 8M-18                       | 18             | 45,84             | 44,47  | -  | 200,0 | C45            |
| 8M-19                       | 19             | 48,38             | 47,01  | -  | 200,0 | C45            |
| 8M-20                       | 20             | 50,93             | 49,56  | -  | 200,0 | C45            |
| 8M-21                       | 21             | 53,48             | 52,11  | -  | 200,0 | C45            |
| 8M-22                       | 22             | 56,02             | 54,65  | -  | 200,0 | C45            |
| 8M-23                       | 23             | 58,57             | 57,20  | -  | 200,0 | C45            |
| 8M-24                       | 24             | 61,12             | 59,75  | -  | 200,0 | C45            |
| 8M-25                       | 25             | 63,66             | 62,29  | -  | 200,0 | C45            |
| 8M-26                       | 26             | 66,21             | 64,84  | -  | 200,0 | C45            |
| 8M-28                       | 28             | 71,30             | 69,93  | -  | 200,0 | C45            |
| 8M-30                       | 30             | 76,40             | 75,03  | -  | 200,0 | C45            |
| 8M-32                       | 32             | 81,49             | 80,12  | -  | 200,0 | C45            |
| 8M-34                       | 34             | 86,58             | 85,21  | -  | 200,0 | C45            |
| 8M-35                       | 35             | 89,13             | 87,76  | -  | 200,0 | C45            |
| 8M-36                       | 36             | 91,68             | 90,31  | -  | 200,0 | C45            |
| 8M-38                       | 38             | 96,77             | 95,40  | -  | 200,0 | C45            |
| 8M-40                       | 40             | 101,86            | 100,49 | -  | 200,0 | C45            |
| 8M-44                       | 44             | 112,05            | 110,67 | -  | 200,0 | C45            |
| 8M-48                       | 48             | 122,23            | 120,86 | -  | 200,0 | C45            |