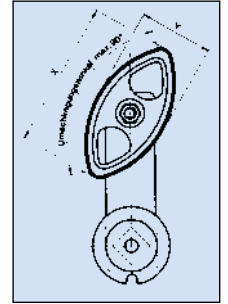
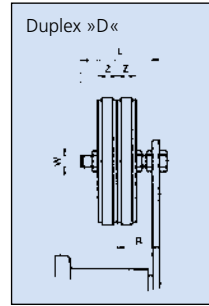
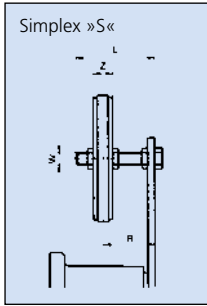
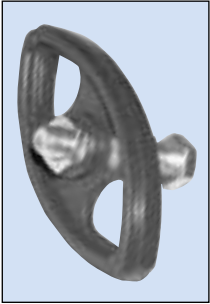


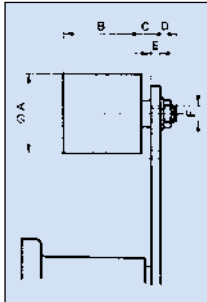
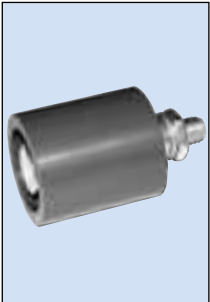
# ROSTA-Spannelemente

Kettengleitersatz  
Satz Typ P



Artikel-Nr. Ketten Fuchs	Typ	für Rollenkette DIN-Nr. 8187	Abmessungen in mm					Schrauben		Spannelement Typ SE/SEF	Gewicht kg
			W	L	X	Y	Z	Anziehmoment Mutter in Nm	Einstellbereich R		
<b>Simplex »S«</b>											
06 550 001	P3/8"-8S	06 B-1	M8	45,0	74,0	37,0	10,2	11	19 – 34	11	0,05
06 550 002	P1/2"-10S	08 B-1	M10	55,0	96,0	48,0	13,9	20	23 – 41	15 18	0,10
06 550 003	P5/8"-10S	10 B-1	M10	55,0	126,0	63,0	16,6	20	24 – 39	18	0,12
06 550 004	P3/4"-12S	12 B-1	M12	80,0	148,0	72,0	19,5	35	30 – 61	27	0,18
<b>Duplex »D«</b>											
06 560 001	P3/8"-8D	06 B-2	M8	45,0	74,0	37,0	10,2	11	25 – 30	11	0,07
06 560 002	P1/2"-10D	08 B-2	M10	55,0	96,0	48,0	13,9	20	30 – 34	15 18	0,12
06 560 003	P5/8"-10D	10 B-2	M10	55,0	126,0	63,0	16,6	20	34 – 46	18	0,17
06 560 004	P3/4"-12D	12 B-2	M12	80,0	148,0	72,0	19,5	35	40 – 52	27	0,26

## Spannrolle Typ R



Artikel-Nr. Ketten Fuchs	Typ	Drehzahl max. (min. <sup>-1</sup> )	Riemen- breite max.	Abmessungen in mm						Anziehungsmoment Mutter in Nm	Spannelement Typ SE/SEF	Gewicht kg
				A	B	C	D	E max.	F			
06 580 001	R 11	8000	30	30,0	35,0	2,0	14,0	5,0	M8	20	11	0,08
06 580 002	R 15 R 18	8000	40	40,0	45,0	6,0	16,0	7,0	M10	20 18	15	0,17
06 580 003	R 27	6000	55	60,0	60,0	8,0	17,0	8,0	M12	35	27	0,40
06 580 004	R 38	5000	85	80,0	90,0	8,0	25,0	10,0	M20	160	38	1,15
06 580 005	R 45	4500	130	90,0	135,0	10,0	27,0	12,0	M20	160	45	1,75